

Home > Equity > Potrero Capital Research LLC And 6 Other Stocks Have High Sales...

Equity Markets

Potrero Capital Research LLC And 6 Other Stocks Have High Sales Growth And An

Home > Equity > Potrero Capital Research LLC And 6 Other Stocks Have High Sales...

Equity Markets

Potrero Capital Research LLC And 6 Other Stocks Have High Sales Growth And An

sales growth, and a 5% or higher return on equity. May these stocks be a good medium-term investment option?

1. Potrero Capital Research LLC (CCB)

163.7% sales growth and 15.35% return on equity

Potrero Capital Research LLC's sales growth this year is anticipated to be 131.8% and 42.6% for next year.

Year-on-year quarterly revenue growth grew by 92.1%, now sitting on 116.01M for the twelve trailing months.

Volume

Today's last reported volume for Potrero Capital Research LLC is 26922 which is 33.52% below its average volume of 40429.

CBOE Over 4% Down In The Last 24 Hours

Via News Editorial Team - July 29, 2022

(VIANEWS) - CBOE (VIX) is currently on bearish momentum. At 05:08 EST on Friday, 29 July, CBOE (VIX) is at 22.10, 4.91% down since...



Bebe Stores, And Ascribe Capital, LLC, And Another 6 Companies Have...

July 29, 2022



USD/EUR Bearish Momentum: 0.52% Down In The Last 24 Hours

July 29, 2022

20002 which is 33.32% below its average volume of 40436.

Potrero Capital Research LLC's sales growth is a negative 0% for the present quarter and 163.7% for the next. The company's growth estimates for the present quarter and the next is a negative 3.6% and 14.8%. The company's return on equity, which measures the profitability of a business relative to shareholder's equity, for the twelve trailing months is 15.35%.

Volatility

Potrero Capital Research LLC's last day, last week, and last month's current intraday variation average was 3.94%, 1.72%, and 1.41%, respectively.

Potrero Capital Research LLC's highest amplitude of average volatility was 3.21% (day), 2.18% (last week), and 3.13% (last month), respectively.

Potrero Capital Research LLC's Stock Yearly Top and Bottom Value

Potrero Capital Research LLC's stock is valued at \$38.54 at 06:22 EST, way under its 52-week high of \$54.41 and way above its 52-week low of \$26.80.

Potrero Capital Research LLC's Moving Average

Potrero Capital Research LLC's worth is higher than its 50-day moving average of \$38.34 and way below its 200-day moving average of \$43.02.

2. Ecopetrol S.A. (EC)

53% sales growth and 15.82% return on equity

Ecopetrol S.A. is an integrated oil-and gas company.

Ecopetrol S.A.'s sales growth this year is anticipated to be 56.9% and 3.5% for next year.

Year-on-year quarterly revenue growth grew by 130.3%, now sitting on N/A for the twelve trailing months.

Volume

Today's last reported volume for Ecopetrol S.A. is 1699910 which is 2.65% above its average volume of 1655990.

Ecopetrol S.A.'s sales growth for the next quarter is 53%. The company's growth estimates for the ongoing quarter and the

Artificial Intelligence



AI Driving Real Estate Revival With Personalized 3D Tours

December 11, 2020

In today's highly competitive commercial and residential real estate markets, only those players who use emerging technologies such as artificial intelligence can thrive and contribute to the development of the industry that...



AI in 2020: No Increase in Adoption But Far From Stalled

December 4, 2020

There has not been an increase in the adoption of artificial intelligence but some companies are capturing value from the frontier technology at the enterprise level and many are generating revenue and...



How to Keep an Edge in the Era of Pervasive AI?

August 7, 2020

AI adopters should be proactive in implementing certain measures if they want to gain or maintain an advantage over their industry peers as the disruptive technology becomes mainstream, according to global

next is 454.5% and 600%. The company's return on equity, which measures the profitability of a business relative to shareholder's equity, for the twelve trailing months is 15.82%.

Volatility

Ecopetrol S.A.'s last day, last week, and last month's current intraday variation average was 2.62%, 2.67%, and 2.95%, respectively.

Ecopetrol S.A.'s highest amplitude of average volatility was 4.94% (day), 4.20% (last week), and 3.81% (last month), respectively.

Ecopetrol S.A.'s Stock Yearly Top and Bottom Value

Ecopetrol S.A.'s stock is valued at \$10.16 at 06:22 EST, way under its 52-week low of \$11.37.

Ecopetrol S.A.'s Moving Average

Ecopetrol S.A.'s worth is way under its 50-day moving average of \$14.56 and way below its 200-day moving average of \$13.53.

3. Group 1 Automotive (GPI)

17.6% sales growth and 41.16% return on equity

Group 1 Automotive, Inc., via its subsidiaries, is active in the automobile retail sector.

Group 1 Automotive's sales growth this year is expected to be 19.3% and 4.4% for next year.

Year-on-year quarterly revenue growth grew by 30.1%, now sitting on 14.37B for the twelve trailing months.

Volume

Today's last reported volume for Group 1 Automotive is 118991 which is 36.13% below its average volume of 186317.

Group 1 Automotive's sales growth for the next quarter is 17.6%. The company's growth estimates for the ongoing quarter and the next is 5% and 12.8%. The company's return on equity, which measures the profitability of a business relative to shareholder's equity, for the twelve trailing months is 41.16%.

Volatility

accounting...

Stock Analysis



Monolithic Power Systems And 3 Other Stocks Have Very High Payout...

Via News Editorial Team - July 29, 2022

(VIANEWS) - Flowers Foods (FLO), Clorox Company (CLX), Saratoga Investment Corp New (SAR) are the highest payout ratio stocks on this list. Here's the data...



Tenaris S.A. And 3 Other Stocks Have High Sales Growth...

July 29, 2022



Laredo Petroleum And 3 Other Stocks Have High Sales Growth...

July 29, 2022

Cryptocurrency

Axie Infinity Price Jumps By 34.29% Over The Last 12 Hours,...

Via News Editorial Team - May 31, 2022



(VIANEWS) - Over the last 12 hours, Axie Infinity (AXS-USD) is 34.29% up at 23:55 EST Monday, 30 May which is 2435.44% higher than...

Origin Protocol Price Jumps By 27.79% Over The Last 6 Hours,...

Via News Editorial Team - May 31, 2022

Group 1 Automotive's last day, last week, and last month's current intraday variation average was 0.46%, 2.07%, and 2.53%, respectively.

Group 1 Automotive's highest amplitude of average volatility was 4.33% (day), 4.11% (last week), and 4.20% (last month), respectively.

Group 1 Automotive's Stock Yearly Top and Bottom Value

Group 1 Automotive's stock is valued at \$174.34 at 06:22 EST, way below its 52-week high of \$212.23 and way above its 52-week low of \$145.72.

Group 1 Automotive's Moving Average

Group 1 Automotive's value is below its 50-day moving average of \$174.98 and under its 200-day moving average of \$182.34.

4. Southern Missouri Bancorp (SMBC)

17.4% sales growth and 15.97% return on equity

Southern Missouri Bancorp, Inc. is the bank holding company of Southern Bank. It provides financial and banking services in the United States to individual customers and corporations.

Southern Missouri Bancorp's sales growth this year is anticipated to be 8.6% and 10% for next year.

Year-on-year quarterly revenue growth grew by 1.4%, now sitting on 120.68M for the twelve trailing months.

Volume

Today's last reported volume for Southern Missouri Bancorp is 9049 which is 64.87% below its average volume of 25759.

Southern Missouri Bancorp's sales growth for the next quarter is 17.4%. The company's growth estimates for the present quarter and the next is a negative 14.4% and negative -6.3%. The company's return on equity, which measures the profitability of a business relative to shareholder's equity, for the twelve trailing months is 15.97%.

Volatility

Southern Missouri Bancorp's last day, last week, and last month's current intraday variation average was 0.77%. 0.91%.



(VIANEWS) - Over the last 6 hours, Origin Protocol (OGN-USD) is 27.79% up at 23:11 EST Monday, 30 May which is 1891.96% higher than...

Terra (LUNA) Cryptocurrency Is 20% Up In The Last 6 Hours

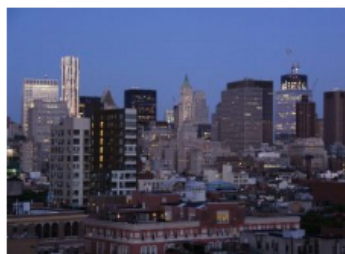
Via News Editorial Team - May 30, 2022



(VIANEWS) - Terra (LUNA) (LUNC-USD) cryptocurrency is currently on bullish momentum by 20.21% in the last 6 hours. At 17:05 EST on Sunday, 29...

Waves (WAVES) Price Jumps By 26.67% Over The Last 12 Hours,...

Via News Editorial Team - May 30, 2022



(VIANEWS) - Over the last 12 hours, Waves (WAVES) (WAVES-USD) is 26.67% up at 05:26 EST Monday, 30 May which is 1841.63% higher than...

DODO (DODO) Price Jumps By 31.99% Over The Last 6 Hours,...

Via News Editorial Team - May 29, 2022



and 1.16%, respectively.

Southern Missouri Bancorp's highest amplitude of average volatility was 2.09% (day), 1.72% (last week), and 2.45% (last month), respectively.

Southern Missouri Bancorp's Stock Yearly Top and Bottom Value

Southern Missouri Bancorp's stock is valued at \$44.40 at 06:22 EST, way under its 52-week high of \$61.93 and way above its 52-week low of \$39.75.

Southern Missouri Bancorp's Moving Average

Southern Missouri Bancorp's value is under its 50-day moving average of \$45.16 and way under its 200-day moving average of \$49.88.

5. Arrow Electronics (ARW)

9.5% sales growth and 21.17% return on equity

Arrow Electronics, Inc. offers products, services, solutions, and support to commercial and industrial users of electronic parts and enterprise computing solutions throughout the Americas, Europe, Middle East, Africa, Asia Pacific, and Asia.

Arrow Electronics's sales growth this year is anticipated to be 8.9% and a negative 1.2% for next year.

Year-on-year quarterly revenue growth grew by 6.6%, now sitting on 34.48B for the twelve trailing months.

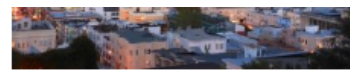
Volume

Today's last reported volume for Arrow Electronics is 263480 which is 57.96% below its average volume of 626883.

Arrow Electronics's sales growth for the next quarter is 9.5%. The company's growth estimates for the present quarter and the next is 65% and 31.2%. The company's return on equity, which measures the profitability of a business relative to shareholder's equity, for the twelve trailing months is 21.17%.

Volatility

Arrow Electronics's last day, last week, and last month's current intraday variation average was 1.64%, 1.62%, and 1.39%, respectively.



(VIANEWS) - Over the last 6 hours, DODO (DODO) (DODO-USD) is 31.99% up at 14:46 EST Sunday, 29 May which is 2212.23% higher than...

Premarket

VerifyMe And Smith & Nephew Among The List Of The Most Active Winners And...

July 28, 2022

Less Than Three Hours Before The NASDAQ Open, VerifyMe Is Up By 9%

July 28, 2022

Less Than Five Hours Before The Market Open, Smith & Nephew Is Down By...

July 28, 2022

Less Than Five Hours Before The NASDAQ Open, Xenetic Biosciences Is Up By 11%

July 28, 2022

Less Than Five Hours Before The Market Open, FuelCell Energy Is Up By 6%

July 28, 2022

Outlook



COVID-19 Forcing Petrochemical Leaders to Rethink Industry's Future

November 11, 2020

Arrow Electronics's highest amplitude of average volatility was 2.34% (day), 2.41% (last week), and 2.66% (last month), respectively.

Arrow Electronics's Stock Yearly Top and Bottom Value

Arrow Electronics's stock is valued at \$120.47 at 06:22 EST, way under its 52-week high of \$137.95 and way higher than its 52-week low of \$105.34.

Arrow Electronics's Moving Average

Arrow Electronics's value is higher than its 50-day moving average of \$116.43 and below its 200-day moving average of \$121.05.

6. Ituran Location and Control Ltd. (ITRN)

6.6% sales growth and 27.34% return on equity

Ituran Location and Control Ltd. and its subsidiaries offer location-based services and products for wireless communication.

Ituran Location and Control Ltd.'s sales growth this year is expected to be 8.4% and 9.8% for next year.

Year-on-year quarterly revenue growth grew by 7%, now sitting on 275.59M for the twelve trailing months.

Volume

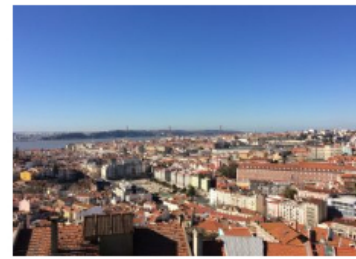
Today's last reported volume for Ituran Location and Control Ltd. is 23695 which is 42.42% below its average volume of 41153.

Ituran Location and Control Ltd.'s sales growth for the next quarter is 6.6%. The company's growth estimates for the present quarter and the next is 6.8% and 6.5%. The company's return on equity, which measures the profitability of a business relative to shareholder's equity, for the twelve trailing months is 27.34%.

Volatility

Ituran Location and Control Ltd.'s last day, last week, and last month's current intraday variation average was 0.04%, 0.80%, and 1.18%, respectively.

Petrochemical industry leaders and financial investors need to update their strategic agendas and focus on recovery scenarios, regionalized supply chains, and capital productivity. That is, if they want to minimize the negative impact...



Lisbon's Short-Term Rentals: Occupancy Plummets, But Some Signs of Recovery

November 6, 2020

The tidal wave of travel cancellations that came along with the coronavirus pandemic upended usual accommodation patterns and put heavy pressure on occupancy levels across the world. Portugal was...



Digital Is the Wave of the Future for B2B Sales

October 30, 2020

The big digital shift in the B2B sector in response to the coronavirus pandemic is here to stay and the ability to gain a competitive advantage will prove to be more vital...



What's Ahead for the Electric Vehicle Market?

September 28, 2020

The immediate effects of the

Ituran Location and Control Ltd.'s highest amplitude of average volatility was 1.04% (day), 2.09% (last week), and 2.78% (last month), respectively.

Ituran Location and Control Ltd.'s Stock Yearly Top and Bottom Value

Ituran Location and Control Ltd.'s stock is valued at \$24.28 at 06:22 EST, way under its 52-week high of \$29.85 and way above its 52-week low of \$19.73.

Ituran Location and Control Ltd.'s Moving Average

Ituran Location and Control Ltd.'s worth is higher than its 50-day moving average of \$23.68 and under its 200-day moving average of \$24.38.

7. Xylem (XYL)

5.9% sales growth and 15.46% return on equity

Xylem Inc. designs, produces, and services engineered products for water and wastewater applications throughout the United States and Europe.

Xylem's sales growth this year is anticipated to be 10.4% and 6.2% for next year.

Year-on-year quarterly revenue growth grew by 3.7%, now sitting on 5.25B for the twelve trailing months.

Volume

Today's last reported volume for Xylem is 1204100 which is 14.73% above its average volume of 1049510.

Xylem's sales growth for the next quarter is 5.9%. The company's growth estimates for the present quarter and the next is 3.2% and 2.5%. The company's return on equity, which measures the profitability of a business relative to shareholder's equity, for the twelve trailing months is 15.46%.

Volatility

Xylem's last day, last week, and last month's current intraday variation average was 2.73%, 1.40%, and 1.88%, respectively.

Xylem's highest amplitude of average volatility was 3.34% (day), 2.62% (last week), and 2.46% (last month), respectively.

The immediate effects of the coronavirus outbreak and the ensuing lockdowns exacted a heavy toll on the global economy and presented the greatest challenge in a decade for the auto sector.



Shared Mobility Poised to Make a Comeback After COVID-19

August 28, 2020

The shared mobility industry has very quickly lost both passengers and profits as a result of the coronavirus outbreak but it can make a strong comeback with the right strategies, says McKinsey...

Robotics



9 New Automation Projects Focused on U.S. COVID-19 Recovery

October 19, 2020

Technology has played a critical role in helping us adapt to the maelstrom of disruption caused by the coronavirus pandemic and the new realities of daily life. Amongst all...



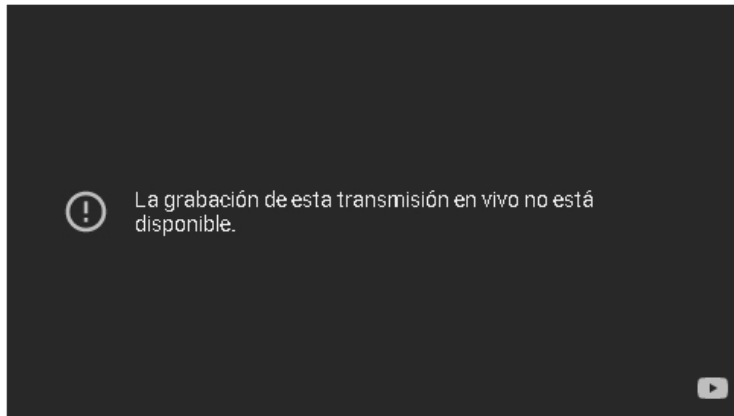
Artificial Intelligence Is Leading a Revolution in

Xylem's Stock Yearly Top and Bottom Value

Xylem's stock is valued at \$87.22 at 06:22 EST, under its 52-week low of \$94.63.

Xylem's Moving Average

Xylem's value is way below its 50-day moving average of \$125.77 and way below its 200-day moving average of \$120.36.



TAGS Arrow Electronics ARW CCB EC Ecopetrol S.A. GPI

Group 1 Automotive Investment Signals ITRN

Ituran Location and Control Ltd. Potrero Capital Research LLC Return on Equity

Sales Growth SMBC Southern Missouri Bancorp Stock Stock Analysis

Wall Street XYL Xylem



Previous article

Cocoa Futures Is 1% Up In The Last 24 Hours

Next article

Less Than Three Hours Before The NASDAQ Open, VerifyMe Is Up By 9%

Via News Editorial Team

<http://via.news>

ViaNews editorial team report. Real-time Financial News & Analysis. Contact support@tviaagency.com for inquiries.



Robotics

October 9, 2019

Robotics, as a discipline has been around for a long time. The increasing demand for automation, however, has seen interest in robots grow exponentially. Statista estimates that the market for Robo-advisors will be worth...

Commodities



Palladium Futures Bearish By 1% In The Last 24 Hours



Platinum Futures Is 1% Up In The Last 24 Hours



Lumber Futures Bearish By 1% In The Last 24 Hours

Cocoa Futures Is 1% Down In The Last 24 Hours



Palladium Futures Rises By 3% In The Last 24 Hours

Potrero Capital Research LLC And 5 Other Stocks Have High Sales Growth And An Above 3% Return on Equity

Potrero Capital Research LLC And 5 Other Stocks Have High Sales Growth And An Above 3% Return on Equity

Ecopetrol S.A. Stock Falls 8% On Friday, Underperform Market

Ecopetrol S.A. Stock Bullish Momentum With A 4.08% Jump On Tuesday

Ecopetrol S.A. Stock Is 25% Down In The Last 30 Days

Potrero Capital Research LLC And 3 Other Stocks Have High Sales Growth And An Above 3% Return on Equity

Ecopetrol S.A. Stock Went Down By Over 34% In The Last 30 Days

Ecopetrol S.A. Stock Is 33% Down In The Last 30 Days

Ecopetrol S.A. Stock Is 8% Down As Session Comes To An End On Tuesday

XP And 7 Other Stocks Have High Sales Growth And An Above 3% Return on Equity

Coastal Financial Corporation And 7 Other Stocks Have High Sales Growth And An Above 3% Return on Equity

Potrero Capital Research LLC And 6 Other Stocks Have High Sales Growth And An Above 3% Return on Equity



LEAVE A REPLY

Comment:

Name:*

Email:*

Website:

Post Comment

Interview

Coronavirus Made Startups Get Real About Their Business Models: Virtuleap's CEO

Elham P.Mohammadi - April 21, 2020

As the world is reeling from the economic fallout of the coronavirus pandemic, many startups are taking a not-so-pleasant or even painful walk down...

Ripatrip: Adventure Travel Search Platform With a Personalized Touch

February 13, 2020

Startup Lisboa: An 8-Year Journey to Promote Spirit of Community

February 3, 2020

Future

COVID-19 Forcing Petrochemical Leaders to Rethink Industry's Future

November 11, 2020

Lisbon's Short-Term Rentals: Occupancy Plummets, But Some Signs of Recovery

November 6, 2020

Digital Is the Wave of the Future for B2B Sales

October 30, 2020

What's Ahead for the Electric Vehicle Market?

September 28, 2020

Shared Mobility Poised to Make a Comeback After COVID-19

August 28, 2020

Startups

Mentors Should Adapt With New Industry-Specific Skills During Pandemic

Via News Editorial Team - September 25, 2020

PeerPull Bringing Coworking Experience Online Amid COVID-19

September 12, 2020

COVID-19 to Accelerate Female Entrepreneurship

September 10, 2020

Germany Voted Best Crisis Manager by Startups

September 3, 2020

What Will Web Summit 2020 Look Like?

August 13, 2020



ABOUT US

Steaming Financial News & Analysis. We provide the facts, you draw conclusions.

ViaNews Agency provides 24/7 real-time financial data.

Advertize with us

support @ via.news

Copyright © 2022 VIA NEWS

FOLLOW US



